

CUADRO DE COORDENADAS

CUADRO DE COORDENADAS DE ZRESA08					
VERTICE	LADO	DIST.	ANGULO	ESTE	NORTE
P1	P1 - P2	29.41	74°17'11"	177,174.64	8,500,938.90
P2	P2 - P3	23.23	166°11'33"	177,203.69	8,500,934.26
P3	P3 - P4	15.40	160°56'48"	177,225.06	8,500,925.15
P4	P4 - P5	12.41	165°35'55"	177,236.49	8,500,914.82
P5	P5 - P6	28.27	163°49'42"	177,243.33	8,500,904.47
P6	P6 - P7	16.87	200°47'25"	177,251.74	8,500,877.49
P7	P7 - P8	29.87	203°21'13"	177,262.15	8,500,864.21
P8	P8 - P9	33.83	165°12'34"	177,288.39	8,500,849.93
P9	P9 - P10	5.50	191°49'15"	177,312.99	8,500,826.72
P10	P10 - P11	9.08	171°13'18"	177,317.68	8,500,823.84
P11	P11 - P12	8.68	193°44'46"	177,324.61	8,500,817.97
P12	P12 - P13	8.27	194°6'29"	177,332.37	8,500,814.09
P13	P13 - P14	8.10	155°53'12"	177,340.45	8,500,812.30
P14	P14 - P15	15.80	161°31'44"	177,346.96	8,500,807.48
P15	P15 - P16	24.19	194°48'17"	177,356.01	8,500,794.53
P16	P16 - P17	18.71	197°7'55"	177,374.48	8,500,778.91
P17	P17 - P18	5.68	199°55'26"	177,391.69	8,500,771.57
P18	P18 - P19	4.15	137°23'30"	177,397.36	8,500,771.25
P19	P19 - P20	6.97	198°14'51"	177,400.25	8,500,768.28
P20	P20 - P21	14.46	163°19'45"	177,406.43	8,500,765.06
P21	P21 - P22	5.85	186°31'56"	177,416.79	8,500,754.98
P22	P22 - P23	6.94	191°27'34"	177,421.42	8,500,751.40
P23	P23 - P24	29.21	71°47'35"	177,427.64	8,500,748.34
P24	P24 - P25	11.31	99°46'27"	177,407.20	8,500,727.48
P25	P25 - P26	21.74	168°8'51"	177,397.89	8,500,733.91
P26	P26 - P27	24.22	193°54'00"	177,382.93	8,500,749.68
P27	P27 - P28	13.08	191°55'10"	177,362.53	8,500,762.72
P28	P28 - P29	50.49	171°26'6"	177,350.29	8,500,767.35
P29	P29 - P30	33.97	176°35'26"	177,306.24	8,500,792.01
P30	P30 - P31	22.33	175°32'7"	177,277.64	8,500,810.34
P31	P31 - P32	31.17	164°24'48"	177,259.84	8,500,823.82
P32	P32 - P33	24.21	184°46'24"	177,240.95	8,500,848.62
P33	P33 - P34	21.00	167°9'18"	177,224.73	8,500,866.60
P34	P34 - P35	13.40	200°42'18"	177,214.48	8,500,884.93
P35	P35 - P36	12.76	236°41'49"	177,204.23	8,500,893.55
P36	P36 - P37	13.35	137°31'51"	177,192.00	8,500,889.90
P37	P37 - P38	15.72	126°31'54"	177,179.99	8,500,895.72
P38	P38 - P39	12.08	172°12'44"	177,177.07	8,500,911.18
P39	P39 - P1	15.77	183°44'32"	177,176.46	8,500,923.24

PLANO DE LOCALIZACIÓN

ESC.: 1/20000

CUADRO DE COORDENADAS DEL AMBITO DE INTERVENCION ZRESA08

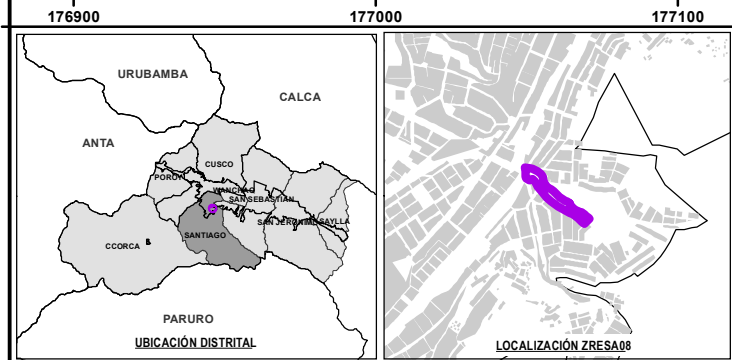
VERTICE	LADO	DIST.	ANGULO	ESTE	NORTE
P1	P1 - P2	35.73	94°34'31"	177,197.68	8,500,970.29
P2	P2 - P3	18.41	171°28'52"	177,228.67	8,500,952.51
P3	P3 - P4	10.66	178°30'57"	177,243.11	8,500,941.09
P4	P4 - P5	19.19	212°55'47"	177,251.29	8,500,934.26
P5	P5 - P6	15.12	180°46'27"	177,270.34	8,500,931.94
P6	P6 - P7	20.77	97°5'33"	177,285.37	8,500,930.32
P7	P7 - P8	28.38	181°27'48"	177,285.72	8,500,909.55
P8	P8 - P9	19.93	259°50'30"	177,286.91	8,500,881.20
P9	P9 - P10	43.84	182°15'36"	177,306.65	8,500,878.51
P10	P10 - P11	10.23	189°0'16"	177,350.29	8,500,874.32
P11	P11 - P12	20.94	171°34'53"	177,360.50	8,500,874.94
P12	P12 - P13	19.12	156°36'27"	177,381.36	8,500,873.15
P13	P13 - P14	30.01	191°59'55"	177,398.20	8,500,864.09
P14	P14 - P15	10.07	187°35'47"	177,427.00	8,500,855.66
P15	P15 - P16	11.65	178°45'38"	177,436.96	8,500,854.13
P16	P16 - P17	23.47	187°25'27"	177,448.43	8,500,852.12
P17	P17 - P18	9.44	186°4'51"	177,471.88	8,500,851.08
P18	P18 - P19	5.12	174°29'34"	177,481.31	8,500,851.67
P19	P19 - P20	1.16	226°4'44"	177,486.43	8,500,851.49
P20	P20 - P21	10.06	137°54'37"	177,487.26	8,500,852.30
P21	P21 - P22	9.81	177°36'20"	177,497.31	8,500,852.66
P22	P22 - P23	10.11	177°34'59"	177,507.12	8,500,852.60
P23	P23 - P24	10.26	178°45'5"	177,517.22	8,500,852.11
P24	P24 - P25	18.26	126°25'53"	177,527.46	8,500,851.39
P25	P25 - P26	14.25	171°14'20"	177,537.24	8,500,835.97
P26	P26 - P27	2.29	223°8'40"	177,542.96	8,500,822.92
P27	P27 - P28	5.95	134°12'47"	177,545.07	8,500,822.01
P28	P28 - P29	19.91	185°32'34"	177,547.20	8,500,816.45

P29	P29 - P30	40.73	179°57'54"	177,556.10	8,500,798.64
P30	P30 - P31	5.96	200°15'45"	177,574.28	8,500,782.19
P31	P31 - P32	20.01	204°39'16"	177,578.62	8,500,758.11
P32	P32 - P33	27.94	186°37'11"	177,597.58	8,500,751.74
P33	P33 - P34	26.93	177°59'36"	177,624.92	8,500,745.95
P34	P34 - P35	28.15	79°41'3"	177,651.06	8,500,739.45
P35	P35 - P36	17.54	179°23'30"	177,639.48	8,500,713.79
P36	P36 - P37	29.84	88°30'57"	177,632.10	8,500,697.87
P37	P37 - P38	11.53	181°34'0"	177,605.37	8,500,711.13
P38	P38 - P39	14.79	227°22'44"	177,594.90	8,500,715.96
P39	P39 - P40	15.79	204°16'58"	177,581.24	8,500,710.29
P40	P40 - P41	24.28	188°28'14"	177,570.44	8,500,698.77
P41	P41 - P42	11.00	184°20'21"	177,566.63	8,500,678.80
P42	P42 - P43	46.79	142°19'41"	177,551.08	8,500,669.31
P43	P43 - P44	39.07	269°53'57"	177,507.70	8,500,651.78
P44	P44 - P45	3.08	114°0'43"	177,522.27	8,500,615.53
P45	P45 - P46	4.44	98°21'34"	177,520.12	8,500,613.31
P46	P46 - P47	8.08	167°24'0"	177,516.51	8,500,615.91
P47	P47 - P48	7.25	176°23'30"	177,511.14	8,500,621.94
P48	P48 - P49	8.49	185°7'38"	177,506.68	8,500,627.85
P49	P49 - P50	15.92	179°55'35"	177,500.87	8,500,633.84
P50	P50 - P51	15.91	181°47'50"	177,489.99	8,500,645.46
P51	P51 - P52	31.44	238°29'42"	177,478.75	8,500,656.73
P52	P52 - P53	4.57	191°20'28"	177,448.17	8,500,649.44
P53	P53 - P54	24.65	149°51'17"	177,444.01	8,500,647.53
P54	P54 - P55	36.04	178°58'34"	177,419.47	8,500,649.85
P55	P55 - P56	5.57	82°7'46"	177,383.65	8,500,653.88
P56	P56 - P57	11.73	186°58'33"	177,385.03	8,500,659.28
P57	P57 - P58	8.14	183°39'13"	177,386.52	8,500,670.91
P58	P58 - P59	6.07	183°18'42"	177,387.04	8,500,679.04
P59	P59 - P60	18.66	180°18'42"	177,387.08	8,500,685.10
P60	P60 - P61	4.30	145°52'54"	177,387.10	8,500,703.76
P61	P61 - P62	13.80	169°26'17"	177,389.51	8,500,707.32
P62	P62 - P63	21.00	273°40'12"	177,399.22	8,500,717.12
P63	P63 - P64	13.14	135°29'56"	177,383.39	8,500,730.91
P64	P64 - P65	23.88	268°11'30"	177,382.37	8,500,744.01
P65	P65 - P66	11.69	91°36'7"	177,358.51	8,500,742.98
P66	P66 - P67	17.75	263°6'40"	177,357.68	8,500,754.64
P67	P67 - P68	6.81	90°14'29"	177,339.95	8,500,755.51

P68	P68 - P69	23.72	272°45'17"	177,340.26	8,500,762.32
P69	P69 - P70	6.50	96°11'19"	177,316.54	8,500,762.24
P70	P70 - P71	17.14	266°41'27"	177,315.82	8,500,768.70
P71	P71 - P72	6.83	89°38'41"	177,298.71	8,500,767.79
P72	P72 - P73	14.38	206°53'24"	177,298.38	8,500,774.60
P73	P73 - P74	24.43	200°7'58"	177,291.28	8,500,787.11
P74	P74 - P75	25.58	181°9'53"	177,272.64	8,500,802.90
P75	P75 - P76	4.59	92°35'28"	177,252.79	8,500,819.04
P76	P76 - P77	21.32	269°54'48"	177,255.52	8,500,822.73
P77	P77 - P78	12.51	187°6'40"	177,238.40	8,500,835.44
P78	P78 - P79	17.63	269°16'7"	177,227.51	8,500,841.60
P79	P79 - P80	26.55	173°17'37"	177,218.63	8,500,826.37
P80	P80 - P81	17.89	52°55'51"	177,202.68	8,500,805.14
P81	P81 - P82	11.19	169°0'2"	177,197.75	8,500,822.34
P82	P82 - P83	43.60	207°48'4"	177,196.77	8,500,833.49
P83	P83 - P84	59.11	159°49'24"	177,173.15	8,500,870.14
P84	P84 - P85	18.18	114°55'7"	177,160.23	8,500,927.82
P85	P85 - P86	5.86	185°26'27"	177,174.64	8,500,938.90
P86	P86 - P87	4.40	130°21'21"	177,178.93	8,500,942.90
P87	P87 - P88	20.44	253°15'57"	177,183.30	8,500,942.39
P88	P88 - P1	11.09	168°58'6"	177,191.41	8,500,961.15

PLANO DE DELIMITACION

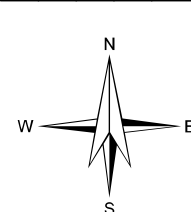
ESC.: 1/2500



LEYENDA GENERAL

- ZONA DE REGLAMENTACIÓN ESPECIAL
- ÁMBITO DE INTERVENCION
- OCUPACION ACTUAL EN EL AMBITO
- AREAS DE APORTE
- MANZANAS ENTORNO URBANO
- BORDE URBANO
- PROPIEDAD APV. INSCRITA EN SUNARP
- CURVAS DE NIVEL
- FRANJA DE ALTA TENSION
- QUEBRADA

ESCALA GRÁFICA



SISTEMA DE COORDENADAS:
WGS 1984 UTM Zone 19S
Projection: Transverse Mercator
Datum: WGS 1984
False Easting: 500,000.0000
False Northing: 10,000,000.0000
Central Meridian: -69.0000
Scale Factor: 0.9996
Latitude Of Origin: 0.0000
Units: Meter

MUNICIPALIDAD PROVINCIAL DE CUSCO

GERENCIA DE DESARROLLO URBANO Y RURAL

SGOZ

PLAN ESPECIFICO ZRESA08

PROYECTO: "MEJORAMIENTO Y RECUPERACION DE LAS CONDICIONES DE HABITABILIDAD URBANA EN 41 ZONAS DE REGLAMENTACIÓN ESPECIAL DE LA PROVINCIA DE CUSCO"

ZONA: ZONA DE REGLAMENTACIÓN ESPECIAL

MAPA: DELIMITACION DEL AMBITO DE INTERVENCION

FUENTE: - POM CUSCO - SGOZ - PDU CUSCO - SGOZ - LEVANTAMIENTO TOPOGRAFICO 41 ZRE - RICHAS TÉCNICAS 41 ZRE - SUNARP	ELABORADO POR: EQUIPO TÉCNICO PM41ZRE	ESCALA: 1:2,500
---	--	--------------------

CÓDIGO: **MD-DAI 01**

MAYO - 2021